



FPI-5600/6600

**INSERTING SYSTEMS.
EASY-TO-USE, MODULAR,
POWERFUL.**

FPI-5600

THE NEW MAIL ROOM ALL-ROUNDER

The FPI-5600 inserting system can feed documents, fold them and insert them in an envelope and then seal it.

- ▶ Delivers finished envelopes to a collecting bin that can be mounted to the left or the right of the machine, or to a downstream machine for further processing. A vertical stacker and a synchronized collecting conveyor are also available as optional equipment.
- ▶ User-friendly operation with a color touch-screen. Just three buttons control basic functions (ON/OFF, Start, Stop). To save energy, the machine automatically switches to stand-by mode when not in use.
- ▶ Documents can be fed from up to six stations, available in various configurations. Automatic and special stations, a high-capacity feeder, short feeder tray and maxi-feeder are also available.
- ▶ Engineered for everyday operation and versatility: mixed daily mail function, multi-sheet function, double-feed detection, feeder-swap (for alternating operation), document recognition with Optical Marks Reading (OMR) with new contact image sensor (CIS), semi-automatic envelope adjustment, memory for programming job settings.



Vertical Stacker (optional), high capacity for up to 325 stuffed envelopes, ergonomically designed for easy handling

5.7" color touchscreen display with graphics-supported user interface and automatic power-saving feature

Contact Image Sensor (optional), for reading document control marks - standard and advanced reading (level) possible from all feeder stations

Document feeders for up to 725 pages, with automatic document separation, standard with 3 or 5 stations



FPI-6600

HIGH VOLUME, VERSATILE APPLICATIONS

The FPI-6600 inserting system builds on the FPI-5600 and offers the same basic functions plus higher performance and a range of additional features and components optimally configured for processing larger quantities of mail. The system can be set up according to the users individual needs to perform almost any mail processing task.

- ▶ In its maximum configuration, 2 Maxi-feeders and high-volume document feed makes it possible to process more than 3,000 sheets of paper. An envelope magazine (for up to 1,000 envelopes) provides a constant supply of envelopes (optional).
- ▶ The vertical stacker (Power-stacker) comes as standard equipment and can be set up to deliver letters to either side. This configuration especially lends itself to the addition of an optional conveyor collector with a capacity of 1,000 envelopes.
- ▶ The system can be equipped with a Versa-feeder for feeding especially thick documents (brochures). Supplementary documents can be added to the set unfolded prior to being inserted in the envelope.
- ▶ The 10.4" color touchscreen guides the user with easy-to-understand instructions and graphic symbols through all job processes.

Power-stacker,

10.4" color touchscreen

Contact Image Sensor

Document feeders for up to 725

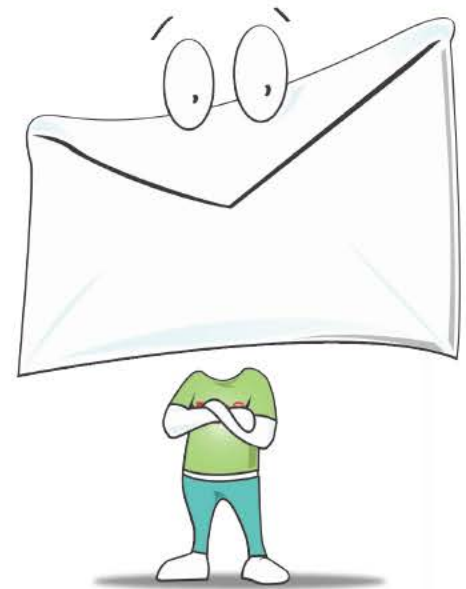




Technical Data

	FPi-5600	FPi-6600
Feeder stations	up to 6	up to 7
Maximum cycles per hour	4,000	4,300
Maximum cycles per month	60,000	80,000
Folding capacity with sheets of 20lb. paper	up to 10	up to 10
Job memory capacity	25	25
Dimensions (approx.) (W x D x H)	16.5" x 72" x 36.5"	29.5" x 59" x 36.5"
Maximum weight	242 lbs.	305 lbs.
Noise emission in dB (A) according to ISO 11202	< 66	< 70
Documents		
Standard feeder capacity (up to 6)	325	325
High capacity feeder (with 3 to 5 stations)	725	725
Height/width	3.5" to 14"/5.1" to 9"	3.5" to 14"/5.1" to 9"
Max thickness	2 mm	2 mm
Envelopes		
Machine capacity in pieces	325	325
Height/width	3.5" to 6.3"/6.3" to 9.7"	3.5" to 6.3"/6.3" to 9.7"
Max thickness	2.5 mm	2.5 mm
Functions		
Automatic Fill & Start program	yes	yes
Feeder Swap tandem operation	yes	yes
Miscellaneous daily mail	yes	yes
Collate sheets before folding	yes	yes
Bottom address	optional	optional
Power-fold technology	yes	yes
Single, C-, Z-, double-parallel folds	yes	yes
»No fold« function	yes	yes
»Fold only« function	yes	yes
Short-fold	optional	optional
Piece counter	yes	yes
Optical Marks Reading (OMR)	optional	optional
Divert & Go function prior to folding	yes	yes
Double document detector	yes	yes
Insert control	yes	yes
Envelope exit		
Vertical stacker capacity C5/6, 1xA4, multiple fold	325	500
Envelope hopper C5/6, 1xA4, multiple fold	225	500
Conveyor collector C5/6, 1xA4, multiple fold	150	1,000

Specifications subject to change



FP Frankie says
 "Sit back, relax, have a cup of coffee while the FPi-5600 and FPi-6600 coasts through your large mailings."



Brothers II
 Business Machines

200 McCormick Drive
 Bohemia, NY 11716-2906
solutions@brothersii.com
www.brothersii.com
 (631) 981-2900

FP Mailing Solutions
 140 N. Mitchell Ct., Suite 200
 Addison, IL 60101-5629
 800.341.6052
www.fp-usa.com