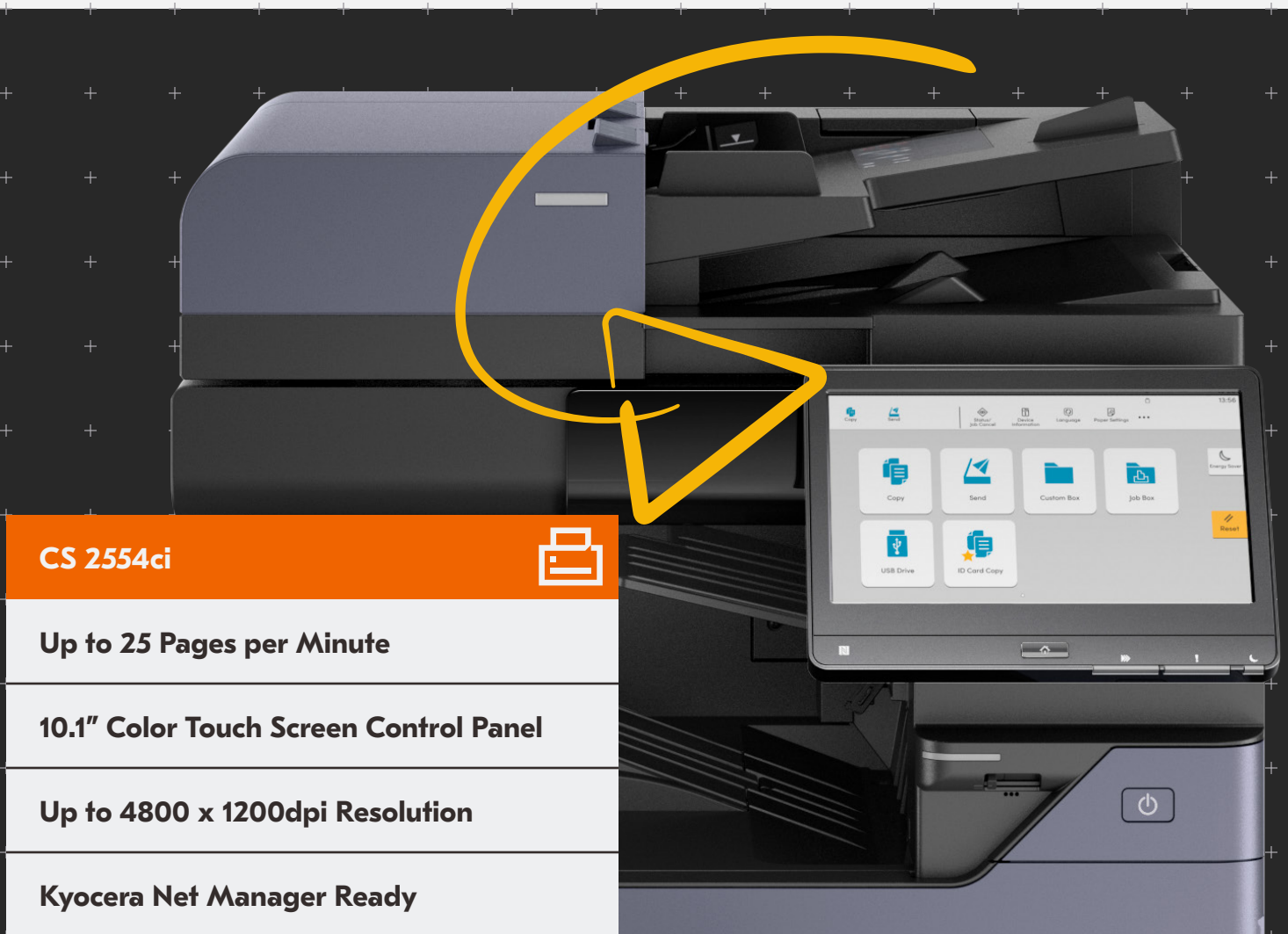



The Latest Evolution in Workplace Printing

The Copystar Evolution Series combines reliable and secure technology with the latest innovation to provide your workplace with a flexible multifunctional printer ready for the challenges of the modern world. Protect your data and count on a device you can rely on for high-quality printing, copying and scanning whenever you need it.



CS 2554ci 
Up to 25 Pages per Minute
10.1" Color Touch Screen Control Panel
Up to 4800 x 1200dpi Resolution
Kyocera Net Manager Ready

BASIC SPECIFICATIONS

Configuration: Color Multifunctional System - Print/Scan/Copy/Optional Fax

Speed: Letter: 25 ppm, Legal: 15 ppm, Ledger: 12 ppm, 12" x 18": 12 ppm (print only)

Warm Up Time: 18 seconds or less (power on)

First Page Out:

Copy: 6.4 seconds or less Black, 8.5 seconds or less Color
Print: 7.0 seconds or less Black, 9.2 seconds or less Color

Display: 10.1" Color Touch Screen Control Panel

Memory/Hard Disk Drive: 4GB RAM/32GB SSD/320GB HDD Standard, 1TB HDD (option)

Duplex: Standard Stackless Duplex supports Statement (5.5" x 8.5") to Ledger (12" x 18"), 16 lb. Bond - 142 lb. Index (60 - 256gsm)

Standard Output Tray: Statement - 12" x 18"/500 Sheets; up to 12" x 48" Banner (single sheet)

Electrical Requirements: 120V, 60Hz, 12A; 220-240V, 50/60Hz, 7.2A

Typical Electricity Consumption (TEC): 120V: .29 kWh/week; 220V: .31 kWh/week

Dimensions: 23.7" W x 26.1" D x 31.1" H

Weight: 198.4 lbs

Maximum Monthly Duty Cycle: 100,000 Pages per Month

PAPER SUPPLY

Standard Paper Sources: Dual 500 Sheet Trays, 150 Sheet MPT, Auto Selection/Switching

Optional Paper Sources: Dual 500 Sheet Trays (PF-7140)
Dual 1,500 Sheet Trays (PF-7150) 3,000 Sheet Capacity Tray (PF-7120)

Paper Capacity: Standard 1,150 Sheets; Maximum 7,150 Sheets

Paper Size:

Tray 1 - 5.5" x 8.5" - 8.5" x 14" (statement to legal); Tray 2 - 5.5" x 8.5" - 12" x 18", Custom Size; PF-7140: 5.5" x 8.5" - 12" x 18" PF-7150/PF-7120: 8.5" x 11" MPT: 5.5" x 8.5" - 12" x 18" (multiple sheets); Up to 12" x 48" Banner (single sheet)

Paper Weight:

Trays/MPT: 14 lb. Bond - 166 lb. Index (52 - 300gsm)

Input Materials:

Standard/Optional Trays: Plain, Bond, Recycled, Preprinted, Vellum, Color, Pre-Punched, Thick, Thin, High Quality, Letterhead, Envelope, Custom; MPT: Plain, Bond, Recycled, Preprinted, Vellum, Color, Pre-Punched, Thick, Thin, High Quality, Transparency (OHP), Coated, Index Tab, Label, Letterhead, Envelope, Custom

SECURITY SPECIFICATIONS

Local Authentication, Network Authentication, Encryption Communication (IPsec, HTTPS, LDAPs, SMTP/POP/FTPS over TLS 1.3, SNMPv3), TPM chipset (Trusted Platform Module), S/MIME, SCEP (auto certificate issuance/renewal), OCSP/CRL (certificate validation), Secure Boot (firmware authenticity verification), Run Time Integrity Check, Data Security Kit 10 enhances IPsec communication (support for FIPS140-2), HDD and Memory Overwrite (7x) Mode and HDD Data Encryption (256 bit), Common Criteria (ISO/IEC-15408/EAL2), IEEE 2600.2

PRINT SPECIFICATION

Standard Controller: ARM Cortex-A53/1.6GHz

PDLs/Emulations: PRESCRIBE, PCL6 (PCL-XL/PCL-5c), KPDL3 (PS3), XPS, OPEN XPS, PDF; Optional (UG 34): IBM ProPrinter, Line Printer, LQ-850

Print Resolution: Up to 4800 x 1200 dpi

Fonts: KPDL3, PCL6, Bitmap

OS Compatibility: Windows: 8.1/10/Server 2012/Server 2012 R2/Server 2016/Server 2019; Mac OS X v10.0 or later; Chrome OS

Mobile Printing: Apple AirPrint®, Mopria®, KYOCERA Mobile Print, KYOCERA MyPanel

Interfaces: Standard: 1000 Base-T/100-Base-Tx/10BASE-T (IPv6, IPv4, IPsec), 802.3az ready, High-Speed USB 3.0, 4 USB 2.0 Host Interfaces, 2 Expansion Slots, IEEE 802.11b/g/n Wireless LAN (communication distance 98.5 feet); Optional: IEEE 802.11a/b/g/n/ac (**IB-37** for 2.4/5GHz), 10/100/1000BaseTX (**IB-50** for Dual NIC); IEEE 802.11b/g/n (**IB-51** for Wireless LAN Interface (communication distance 328.1 feet))

Network Print and Supported Protocols: HTTPS, FTPS, SNMP v1/v2c/v3, Raw Port (Port 9100) TCP/IP, IPv4, IPv6, DHCP LPR, DNS, WSD Scan/Print.

Drivers: KX Driver, PCL Mini Driver, KPDL Mini Driver, KX Driver for XPS, Network Fax Driver, TWAIN Driver, WIA Driver, Status Monitor, Common Profile, Output to PDF, Security Watermark, Color Optimizer, MAC Driver, Chrome Print Driver, Linux Driver, KX Driver with Distributed Printing, Windows Inbox Driver, SANE Driver.

Utilities: KYOCERA Net Viewer, KYOCERA Device Manager, Quick Setup, KX PRESCRIBE Macro Generator, ID Register, Software Management Service, Upgrade Studio, Web Package Builder/Maker, Removal Tool, Wi-Fi Setup Tool, PDF Direct Print, Command Center RX; Kyocera Net Manager (option)

SCAN SPECIFICATION

Scan Type: Color and Black & White Scanner

Scan Resolution: 600 dpi, 400 dpi, 300 dpi, 200 dpi, 200 x 100 dpi, 200 x 400 dpi

File Formats: TIFF, JPEG, XPS, OpenXPS, PDF/A-2.0 (MMR/JPX Compression/High Compression PDF); Option: Scan Extension Kit Text Searchable PDF; MS Office File

Connectivity/Supported Protocols: 10 BASE-T/100 BASE-TX/1000 BASE-T (IPv6, IPv4, IPsec) TCP/IP, Hi-Speed USB 3.0

Scanning Functions: Scan-to-Folder (SMBv3), Scan-to-Email, Scan-to-FTPS, Scan-to-FTPS over TLS 1.3, Scan-to-USB, WSD Scan, DSM/SANE Scan, TWAIN Scan, Specified Color Removal, Border Erase, Preview

Original Size: Document Processor: 5.5" x 8.5" - 11" x 17"; Glass: Up to 11" x 17"

Drivers: TWAIN/WIA/DSM-SANE Driver/WSD Scan

OPTIONAL DOCUMENT PROCESSORS²

Acceptable Originals: 5.5" x 8.5" - 11" x 17"

DP-7140: Reversing Automatic Document Processor/50 Sheets
Speed: Simplex: 50 ipm (BW/Color); Duplex: 16 ipm (BW/Color)
Weight: Simplex: 13 lb. Bond - 90 lb. Index (45 - 160gsm); Duplex: 16 lb. - 32 lb. Bond (50 - 120gsm)

DP-7150: Reversing Automatic Document Processor/140 Sheets
Speed: Simplex: 80 ipm (BW/Color); Duplex: 48 ipm (BW/Color)
Weight: Simplex: 13 lb. Bond - 90 lb. Index (35 - 160gsm); Duplex: 16 lb. - 32 lb. Bond (50 - 120gsm)

DP-7160 (with multi-feed detection):
Dual Scan Document Processor/320 Sheets
Speed: Simplex: 100 ipm BW/Color; Duplex: 200 ipm (BW/Color)
Weights: Simplex: 13 lb. Bond - 120 lb. Index (35 - 220gsm); Duplex: 16 lb. - 120 lb. Index (50 - 220gsm)

DP-7170 (with multi-feed and staple detection):
Dual Scan Document Processor/320 Sheets
Speed: Simplex: 100 ipm (BW/Color); Duplex: 200 ipm (BW/Color)
Weights: Simplex: 13 lb. Bond - 120 lb. Index (35 - 220gsm); Duplex: 16 lb. - 120 lb. Index (50 - 220gsm)

COPY SPECIFICATIONS

Copy Resolution: 600 x 600 dpi

Image Mode: Text, Photo, Text/Photo, Graphic/Map

Continuous Copy: 1 - 9,999

Additional Features: Auto Magnification, Auto Paper Select, Combine Copy, Mirror Image, Rotate Copy, Border Erase, Split Copy, Margin Shift, Page Number, Form Overlay, Blank Page Skip, Specified Color Removal, Proof Copy, Preview, ID Card Copy, Handwriting Emphasis, Super Resolution

Job Management: 1,000 User Codes, Job Build, Super Resolution, Shortcut Keys, Repeat Copy

Magnification/Zoom: Full Size, 4 Reduction, 4 Enlargement
Preset Ratios, 25 - 400% in 1% Step Increments

Document Box: Custom Box, Job Box, USB Drive Box, Fax Box (with optional Fax System)

OPTIONAL FAX SPECIFICATIONS

Fax Type: Fax System 12 (option)

Type/Data Compression: G3 Fax/MMR, MR, MH, JBIG

Transmission Speed/Modem Speed: Less than 3 seconds/
33.6 Kbps

Fax Memory: Standard 170 MB

Driver: Network Fax Driver

Fax Functions: Network Fax, Duplex Transmission and Reception, Encrypted Transmission and Reception, Polling Transmission and Reception, Broadcast, Fax Server Integration, Fax Dedicated Paper Feed Tray, Fax Forwarding to email or file

SOLUTIONS AND SERVICES**Remote Management**

Kyocera Fleet Services ready! A highly secure cloud-based monitoring solution that offers real-time visibility into your fleet. Optimize device uptime and be notified when to replenish supplies. Streamline billing with seamless 3rd party application integration, allowing you to focus solely on your business.

Printing Software

Cost Control & Security, Cloud & Mobile, Printer Management

Content Services

Scan & Connect, Intelligent Process Automation, Enterprise Content Management

IT Solutions

Technology Solutions, Including solutions for Cloud and Data Centers; Network Infrastructure, Cybersecurity Solutions, Collaboration Solutions

Consulting Services

Including IT Health Check, CIO as a Service, Healthcare Compliance, Backup and Recovery Planning

Professional Services

Including Design and Architecture, Project Implementation, Project Management

Managed Services

Including Help Desk Services, Retainer Services and On-site Support

Output & Finishing Options₃

OPTIONAL 250 SHEET INNER SHIFT TRAY JS-7100

Stack Capacity: 250 Sheets

Paper Size: 8.5" x 11" – 11" x 17"

Paper Weight: 14 lb. Bond – 166 lb. Index (52 – 300gsm)

OPTIONAL 500 SHEET INTERNAL FINISHER DF-7100₄

Stack/Staple Capacity: 500 Sheets/50 Sheets

Paper Size: 5.5" x 8.5" – 12" x 18"

Paper Weight: 14 lb. Bond – 166 lb. Index (52 – 300gsm)

Edge Staple Position: 3 Positions: Front 1 Staple, Edge 1 Staple, Face 2 Staples

Optional Punch: PH-7100 2/3 Hole Punch Unit, Supports 5.5" x 8.5" – 12" x 18"; 14 lb. Bond – 166 lb. Index (52 – 300gsm)

Dimensions: 19.4" W x 21" D x 6.9" H

OPTIONAL 1,000 SHEET FINISHER DF-7120₄

Stack/Staple Capacity: Main Tray: 1,000 Sheets/50 Sheets (up to 24 lb. Bond [90gsm])

Paper Size: 5.5" x 8.5" – 12" x 18"

Paper Weight: 14 lb. Bond – 166 lb. Index (52 – 300gsm)

Edge Staple Position: 3 Positions: Top Left, Bottom Left, Center Bind

Optional Punch: PH-7A 2/3 Hole Punch Unit, Supports 5.5" x 8.5" – 12" x 18"; 14 lb. Bond – 166 lb. Index (52 – 300gsm)

Dimensions: 21.6" W x 24.4" D x 41.3" H

OPTIONAL 4,000 SHEET FINISHER DF-7140₄

Stack/Staple Capacity: Main Tray (A): 4,000 Sheets; Sub Tray (B): 200 Sheets/65 Sheets (up to 24 lb. Bond [90gsm])

Paper Size: 5.5" x 8.5" – 12" x 18"

Paper Weight: 14 lb. Bond – 166 lb. Index (52 – 300gsm)

Edge Staple Position: 3 Positions: Top Left, Bottom Left, Center Bind

Optional Punch: PH-7A 2/3 Hole Punch Unit, Supports 5.5" x 8.5" – 12" x 18"; 14 lb. Bond – 166 lb. Index (52 – 300gsm)

Dimensions: 29" W x 26" D x 42" H

Optional Booklet Folder/Tri-fold Unit BF-730: (DF-7140)

Booklet Folder supports 8.5" x 11", 8.5" x 14", 11" x 17"; Fold Booklet Staple: 16 lb. – 24 lb. Bond (60 – 90gsm) 20 sheets; 25 lb. – 28 lb. Bond (91 – 105gsm) 13 sheets; Higher than 28 lb. Bond (Higher than 105 gsm) 1 sheet; Fold booklet no staple: 16 lb. – 24 lb. Bond (60 – 90gsm) 5 sheets; 25 lb. Bond – 72 lb. Index (91 – 120gsm) 3 sheets; 32 lb. Bond – 110 lb. Cover (121 – 256gsm) 1 sheet; Trifold supports 8.5" x 11" only: 16 lb. – 24 lb. Bond (60 – 90gsm) 5 sheets; 25 lb. Bond – 72 lb. Index (91 – 120gsm) 3 sheets; 16lb. – 28 lb. Bond (60 – 105gsm) 1 sheet

Optional Multi-Bin Mailbox MT-730(B): (DF-7140) 7 Trays; Supports: 16 lb. Bond – 90 lb. Index (60 – 163gsm); Stack Capacity per bin: 100 Sheets: 5.5" x 8.5", 8.5" x 11"; 50 Sheets: 8.5" x 14", 11" x 17"

ADDITIONAL OPTIONS

AK-7110 Bridge Unit Attachment Kit, JS-7100 Job Separator, HD-16 Large Capacity HDD (1TB), Banner Guide 10, Internet Fax Kit (A), Card Authentication Kit (B), Dual NIC (IB-50), Extended Range Wireless LAN NIC (IB-51), Thin Print option (UG-33), Printer Emulation option (UG-34), DT-730(B) Document Tray, Scan Extension Kit (A) for Text Searchable PDF; MS Office File, Keyboard Holder 10, Numeric Keypad (NK-7130), Cabinet Stand

- ¹ Requires PF-7140
- ² Only 1 Document Processor can be installed
- ³ Only 1 Output Option can be installed
- ⁴ Requires Bridge Unit Attachment Kit (AK-7110)

Specifications and design are subject to change without notice. For the latest on connectivity visit copystar.com. CS, PRESCRIBE, Kyocera Net Manager, Kyocera Net Viewer, Kyocera Device Manager, PDF Direct Print, Command Center RX, and KX Driver are trademarks of The Kyocera Companies. Mac OS and AirPrint are trademarks of Apple, Inc. Mopria is a trademark of Mopria Alliance, Inc. Windows is a trademark of Microsoft, Inc. All other trademarks are the property of their respective owners.



Brothers II
Business Machines

brothersii.com
631-981-2900



Copystar Partner

KYOCERA Document Solutions America
225 Sand Road, PO Box 40008
Fairfield, New Jersey 07004-0008, USA
Tel: 973-808-8444



copystar.com